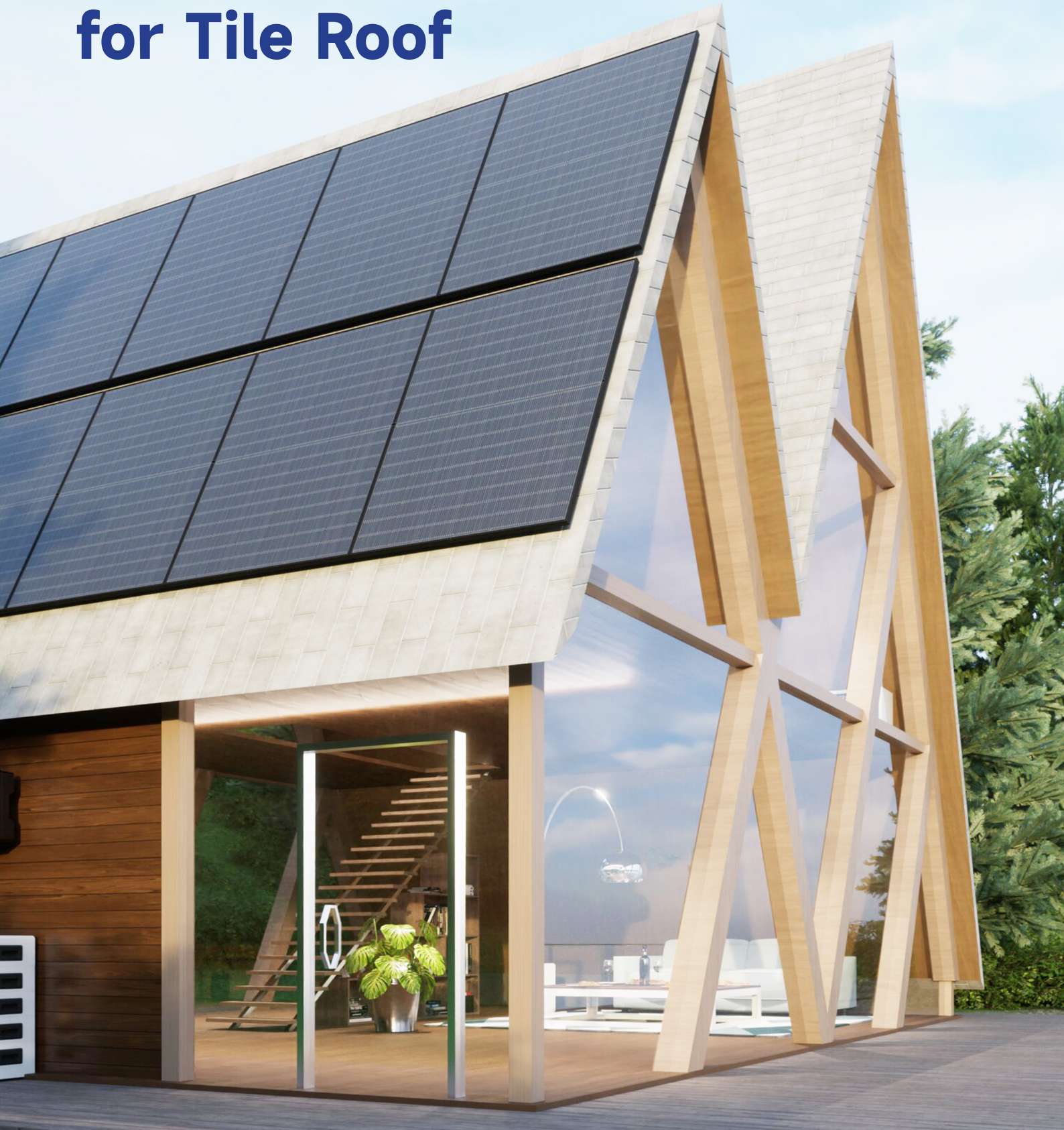


Mounting System for Tile Roof





Technical Parameter

| | | | |
|-------------------------|--------------------------------------|------------------|--|
| Product Name | Solar Mounting System | Design Standard | EN1990 Basis of Structure Design |
| Building Type | Pitched Roof | | EN1991-1-3 Actions on Structure-Snow loads |
| Tile Type | Concrete Tile, Clay Tile, Slate Tile | | EN1991-1-4 Actions on Structure-Wind loads |
| Tilt Angle | 15° -60° | Main Material | AL6005-T6(Anodized) |
| Wind Load | 0.8KN/ m ² | Fastener | SUS304 & Zinc-Nickel Alloy Electroplated Steel |
| Snow Load | 1.6KN/ m ² | Small Components | AL6005-T6(Anodized) |
| Applicable Solar Module | Framed | Color | Silver and black |
| Panel Layout | Portrait or Landscape | Certificate | TUV |

| | Item No. | Description | Material | | Item No. | Description | Material |
|---|-----------|---------------------|-----------|---|-----------|---------------|------------|
|  | 51211786A | Rail H40 | AL6005-T6 |  | 51230026R | End cap | Silica Gel |
|  | 31220174A | Rail Splice | AL6005-T6 |  | 55110091 | Cable clip | SUS304 |
|  | 31101261A | Universal clamp kit | AL6005-T6 |  | 31510043A | Grounding Lug | AL6005-T6 |
|  | 31101262A | Tile hook | AL6005-T6 |  | 51500011F | Earthing clip | SUS304 |