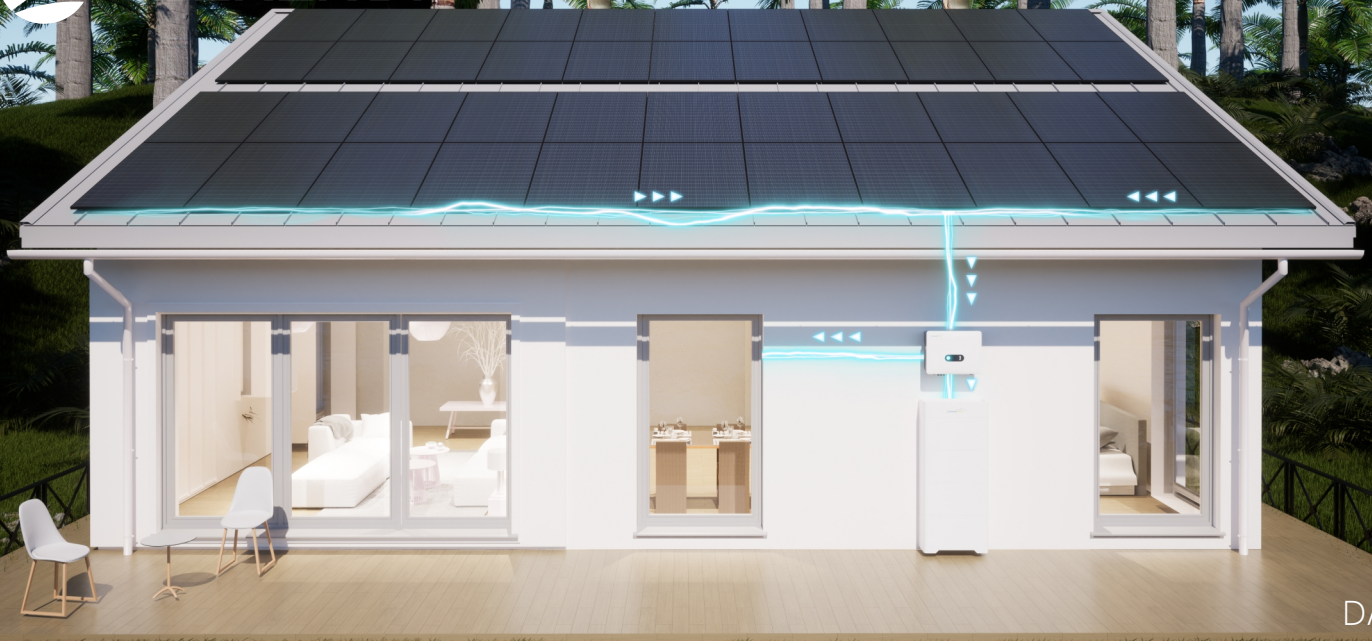




# SLENERGY



DAY



NIGHT



## Share - Home Smart Solar Solution



### Valuable

Standardized BOM,save design time  
Quick installation,save labor cost  
Full process service,customer peace of mind



### Smart

Real-time monitoring,intelligent control  
Intelligent detection,safe operation  
Remote upgrade,fault alarm



### Reliable

Integrated design,lower failure rate  
Unified standard,higher product quality  
Active power off protection and Arc-fault circuit  
interrupter,safer system



### Simple

Preassembled parts, simple connection  
Packing in system, convenient for warehouse sorting

The high voltage hybrid inverter applies to the three-phase power grid with a voltage of 230/400V and a frequency of 50/60Hz. Mounting structure is tailored specifically for Pitched Roof buildings of Concrete Tile, Clay Tile or Slate Tile.

## iShare Home Smart Solar Solution

Model	iShare-4kW	iShare-5kW	iShare-6kW	iShare-8kW	iShare-10kW	iShare-12kW	iShare-15kW
System capacity (kW <sub>ac</sub> )	4	5	6	8	10	12	15
No. PV modules (pcs)/405W	10/12/14	16/18	20/22	24/26/28	30/32/34/36	38/40/42/44	46/48/50
Effective Roof Area Approx.	20m <sup>2</sup> ~30m <sup>2</sup>	35m <sup>2</sup> ~40m <sup>2</sup>	45m <sup>2</sup> ~50m <sup>2</sup>	55m <sup>2</sup> ~65m <sup>2</sup>	70m <sup>2</sup> ~90m <sup>2</sup>	95m <sup>2</sup> ~115m <sup>2</sup>	120m <sup>2</sup> ~135m <sup>2</sup>
Inverter	SL-D4KTR-H25	SL-D5KTR-H25	SL-D6KTR-H25	SL-D8KTR-H25	SL-D10KTR-H25	SL-D12KTR-H25	SL-D15KTR-H40
Battery	SL-BH-3-7 ~ SL-BH-8-20						
Cable set	DC Cable: HIZ2Z2-K 1×6mm <sup>2</sup> ;HIZ2Z2-K 1×10mm <sup>2</sup> ; UL 11627 10AWG; UL 11627 8AWG						
	AC Cable: NYY-J 5×4/5×6mm <sup>2</sup> ;NYY-J 5×6/5×10mm <sup>2</sup> ; H03VV- F 4×0.5mm <sup>2</sup>						
	Grounding Cable: H07V-K 6mm <sup>2</sup> ; NYY 1×6mm <sup>2</sup>						
	Communication Cable: STP CAT5e						
	Connectors						
Mounting Structure set	Rail, hook kit, rail connector, mid-clamp, end-clamp, earthing lug and other accessories						
AC Box	Optional						
Cloud & APP	1 set						
Power generation estimates	12-15kWh/day 4380-5480kWh/year	17-20kWh/day 6205-7300kWh/year	23-26kWh/day 8470-9530kWh/year	29-32kWh/day 10590-11650kWh/year	35-41kWh/day 12700-14820kWh/year	44-50kWh/day 15880-18000kWh/year	52-58kWh/day 19050-21170kWh/year

Larger capacity systems can be configured according to demand.

The power generation is calculated based on Berlin, Germany. The annual peak sunshine hours are 1253h. Each 1kWh generated reduce 0.997kg of CO<sub>2</sub>.

2

## Main product parameters

PV Modules	SL-108PA-405						
Maximum power (P <sub>max</sub> /W)	405W						
Open-circuit voltage (V <sub>oc</sub> /V)	37.38						
Short circuit current (I <sub>sc</sub> /A)	13.76						
Peak power voltage (V <sub>mp</sub> /V)	31.35						
Peak power current (I <sub>mp</sub> /A)	12.92						
Temperature coefficient of short circuit current (I <sub>sc</sub> )	+0.048%/°C						
Temperature coefficient of open circuit voltage (V <sub>oc</sub> )	-0.26%/°C						
Temperature coefficient of peak power (P <sub>max</sub> )	-0.340%/°C						
Max. Efficiency	20.70%						
L*W*H/Weight	1722×1134×30mm/21.2kg						
Certificate	IEC 61215, IEC 61730, ISO 9001: 2015, ISO 14001:2015, IEC 62716, IEC 61701, IEC TS 62804-1, IEC 60068-2-68						
Inverter	SL-D4KTR-H25	SL-D5KTR-H25	SL-D6KTR-H25	SL-D8KTR-H25	SL-D10KTR-H25	SL-D12KTR-H25	SL-D15KTR-H40
PV Input							
Rated DC Input Voltage(V)	1000	1000	1000	1000	1000	1000	1000
MPPT Voltage range(V)	120-950	120-950	120-950	200-950	200-950	200-950	200-950
No. of Mppt	2	2	2	2	2	2	2
No. of DC Inputs per MPPT	1	1	1	1	1	1	2
Max. input Current (A)	15/15	15/15	15/15	15/15	15/15	15/15	30/30
Max. Short-circuit Current (A)	20/20	20/20	20/20	20/20	20/20	20/20	40/40
Battery Side							
Battery Type	Lithium Battery(with BMS)						
Battery Voltage Range (V)	135-750						
Max. Charge/Discharge Current(A)	25/25				40/40		

## Main product parameters

Grid Side							
Rated Output Power (kW)	4	5	6	8	10	12	15
Max. Output Apparent Power (kVA)	4.4	5.5	6.6	8.8	11	13.2	16.5
Max. Input Apparent Power (kVA)*	8	10	12	16	16.5	16.5	30.0
Rated AC Voltage (V)	3L/N/PE; 220/380V; 230/400V; 240/415V						
Power Factor	0.8 leading – 0.8 lagging						
Back-up Side							
Rated Output Power (kW)	4	5	6	8	10	12	15.0
Max. Output Apparent Power (kVA)	4.4	5.5	6.6	8.8	11	13.2	16.5
UPS Switching Time	<10ms	<10ms	<10ms	<10ms	<10ms	<10ms	<10ms
Rated Output Voltage (V)	3L/N/PE; 220/380V; 230/400V; 240/415V						
Peak Output Apparent Power (kVA)*	8, 60s	10, 60s	12, 60s	16, 60s	20, 60s	20, 60s	25, 60s
Efficiency							
Max. Efficiency	98.10%	98.10%	98.10%	98.10%	98.20%	98.20%	98.40%
Europe Efficiency	97.30%	97.30%	97.30%	97.40%	97.40%	97.40%	97.50%
Certification							
IEC/EN 62109, IEC.EN 61000, EN50549-1, TOR Generator Type A, VDE-AR-N-4105							
Protection	DC Reverse Polarity Protection; Battery Input Reverse Connection Protection; Insulation Resistance Protection; Surge Protection; Over-temperature Protection; Residual Current Protection; Islanding Protection; AC Over-voltage Protection; Overload Protection; AC Short-circuit Protection						
General Data							
Over Voltage Category	PV: II; Main: III						
W*H*D(mm)	534 x 418 x 210						
Weight (kg)	31.0						
Protection Degree	IP65						
Operating Temperature Range (°C)	-30~60						
Noise level	<40						
Battery	SL-BH-3-7	SL-BH-4-10	SL-BH-5-12	SL-BH-6-15	SL-BH-7-17	SL-BH-8-20	
Rated power (kWh)	7.68	10.24	12.8	15.36	17.92	20.48	
Nominal Capacity	50Ah						
Maximum Charge/Discharge Current	25A (Recommend) / 50A (Maximum)						
Cycle Times	6000 Cycle @80% DOD						
Working Temperature	0°C-55°C@Charging/ -20°C-55°C@Discharging						
Protection Degree	IP54						
Dimensions (W*D*H mm) / Weight	710x320x639	710x320x776	710x320x913	710x320x1050	710x320x1187	710x320x1324	
	118kg	150.8kg	183.6kg	216.4kg	249.2kg	282kg	
Certification	CE/IEC 62619 / UN38.3						
Mounting System							
Product Name	Tile Hook		Design Standard	AS/NZS 1170, DIN 1055, JIS C8955: 2017			
Installation Site	Pitched Roof			International Building Code IBC2009;			
Foundation	Tile, Flat Tile, Slate Tile, Asphalt Shingle Tile			California Building Code CBC 2010;			
Tilt Angle	15-60°		Hook Materia	AL6005-T6(Anodized)			
Wind Load	0.8KN/m²		Fastener	SUS304 & Zinc-Nickel Alloy Electroplated			
Snow Load	1.6KN/m²		Small Components	AL6005-T6(Anodized)			
Applicable Solar Module	Framed or Frameless		Color	Silver and black or Customized Color			
Panel Layout	Portrait or Landscape		Certificate	TUV			

\* Max apparent power from the grid means the maximum power imported from the utility grid used to satisfy the backup loads and charge the battery.